

Application

To suit all:

- Full range of steel feed rollers.
- All sizes of rubber rollers.
- Re-rubbing service available

Steel Roller Heavy Duty



Part. Nr.	Description
91405035HD	140 x 50 x 35 (Keyway)
9140253506HD	140 x 25 x 35 (keyway)
9140153506HD	140 x 25 x 35 (6 holes)
9140153506HD	140 x 15 x 35 (6 holes)

Application: used in most moulding machines in a variety of joinery and furniture applications.

Hard chromed Feed Roller



Part. Nr.	Description
91705035HWC	170 X 50 X 35 (Keyway)
91405035HWC	140 x 50 x 35 (Keyway)
92155045HWC	215 x 50 x 45 (Keyway)
92203050HWC	220 X 30 X 50 (Keyway)
91402030HWC - 6 HOLE	140 X 20 X 30 (6 holes)

Application: Used in high production moulding applications. Other sizes available upon request.

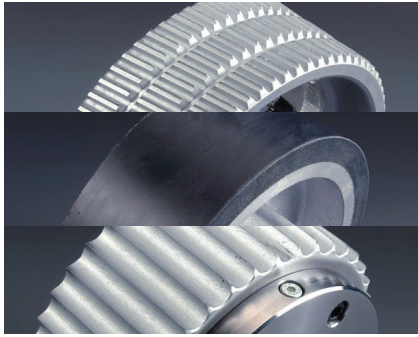
Poly Urethane



Part. Nr.	Description
91405035PU	140 x 50 x 35 (Keyway)
1705035PU	170 x 50 x 35 (Keyway)
91402535PU	140 x 25 x 25 (Keyway)
91401535PU	140 x 15 x 35 (Keyway)
9140253506PU	140 x 25 x 35 (3 Holes)

Application: Used in high production moulding applications.

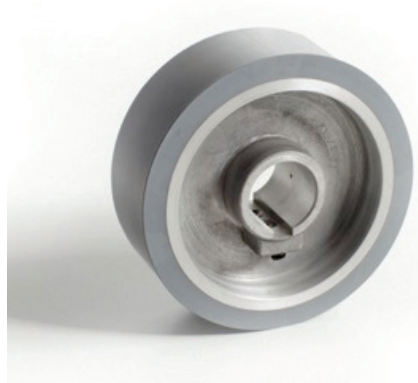




Application

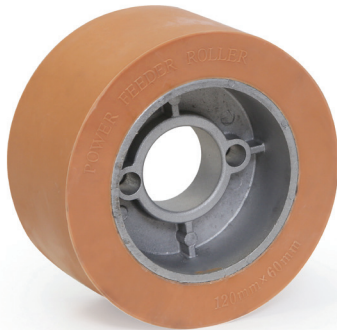
To suit all:

- Full range of steel feed rollers.
- All sizes of rubber rollers.
- Re-rubbing service available



Rubber Roller

Part. Nr.	Description
91405035RU	140 x 50 x 35 (Keyway)
1705035RU	170 x 50 x 35 (Keyway)
91402535RU	140 x 25 x 25 (Keyway)
91401535RU	140 x 15 x 35 (Keyway)
9140253506RU	140 x 25 x 35 (3 Holes)



Spindle Roller

Part. Nr.	Description
FE - O - 07	120 x 60 x 35
FE - O - 27	120 x 50 x 35

Application: Mechanical power feed unit for spindle moulding machines.