



POLYURETHANE KEYWAY

Used in high production moulding applications

Can be positioned perfectly along the shaft to suit the required timber profile

Easily add extra rollers or remove to suit timber width machined

TECHNICAL

Available in other diameters for custom requirements

Widths from 15mm – 50mm

Available in bolt holes



HEAVY DUTY STEEL ROLLER

Used in most moulding machines in a variety of joinery and furniture applications

Can be positioned perfectly along the shaft to suit the required timber profile

Simply bolt on additional rollers or remove to suit the width of material

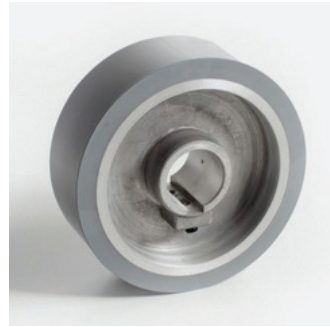
TECHNICAL

140, 170, 220mm diameters

Custom-made diameters available

Widths from 15mm – 50mm

Available in bolt holes



RUBBER ROLLER

Joinery and Furniture applications

For use in most Moulding machines

35mm shaft with keyway

Made from a softer rubber compound for a stronger grip

Used for small runs

TECHNICAL

140mm & 170mm diameter

Custom-made diameters available

Widths from 15mm – 50mm



CHROMED STEEL FEED ROLLER

Used in Hardwood Sawmills

Excellent for Blackbutt, Ironbark, Spotted Gum, Blue Gum, Tallowood

Due to the distance between the teeth this roller does not become 'clogged' when in use

TECHNICAL

140, 170, 220mm diameters

Widths from 15mm – 50mm

Available in bolt holes